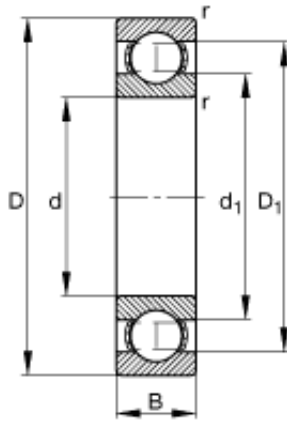




BEARING CORP.

20 mm x 42 mm x 12 mm B43-4A Deep Groove Ball Bearing 43x87x19.5mm

Bearing No. 6004



6004 Bearing 2D drawings and 3D CAD models

| | |
|----------------|--|
| Size | 20x42x12 mm |
| Bore Diameter | 20 mm |
| Outer Diameter | 42 mm |
| Width | 12 mm |
| d | 20 mm |
| D | 42 mm |
| B | 12 mm |
| D_1 | 35,5 mm |
| $D_{a \max}$ | 38,8 mm |
| d_1 | 26,6 mm |
| $d_{a \min}$ | 23,2 mm |
| $r_{a \max}$ | 0,6 mm |
| r_{\min} | 0,6 mm |
| m | 0,069 kg / Weight |
| C_r | 10000 N / Dynamic load rating (radial) |
| C_{0r} | 5000 N / Static load rating (radial) |
| n_G | 24800 1/min / Limiting speed |
| n_B | 18200 1/min / Reference speed |
| C_{ur} | 255 N / Fatigue limit load, radial |